

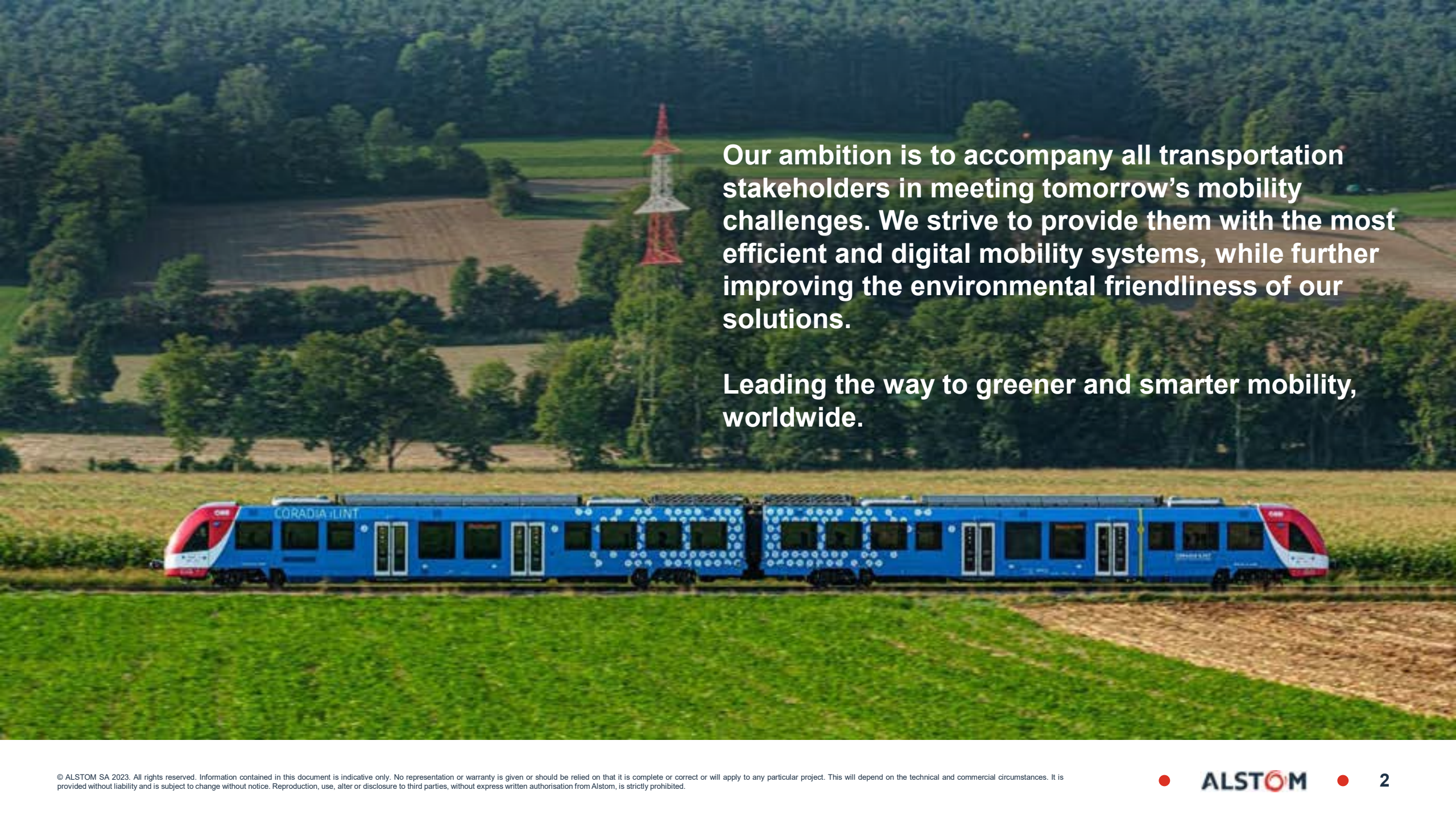


Alstom
Leading the way to greener
and smarter mobility,
worldwide.

Katya Lyane

May 5th, 2023

ALSTOM
• mobility by nature •



Our ambition is to accompany all transportation stakeholders in meeting tomorrow's mobility challenges. We strive to provide them with the most efficient and digital mobility systems, while further improving the environmental friendliness of our solutions.

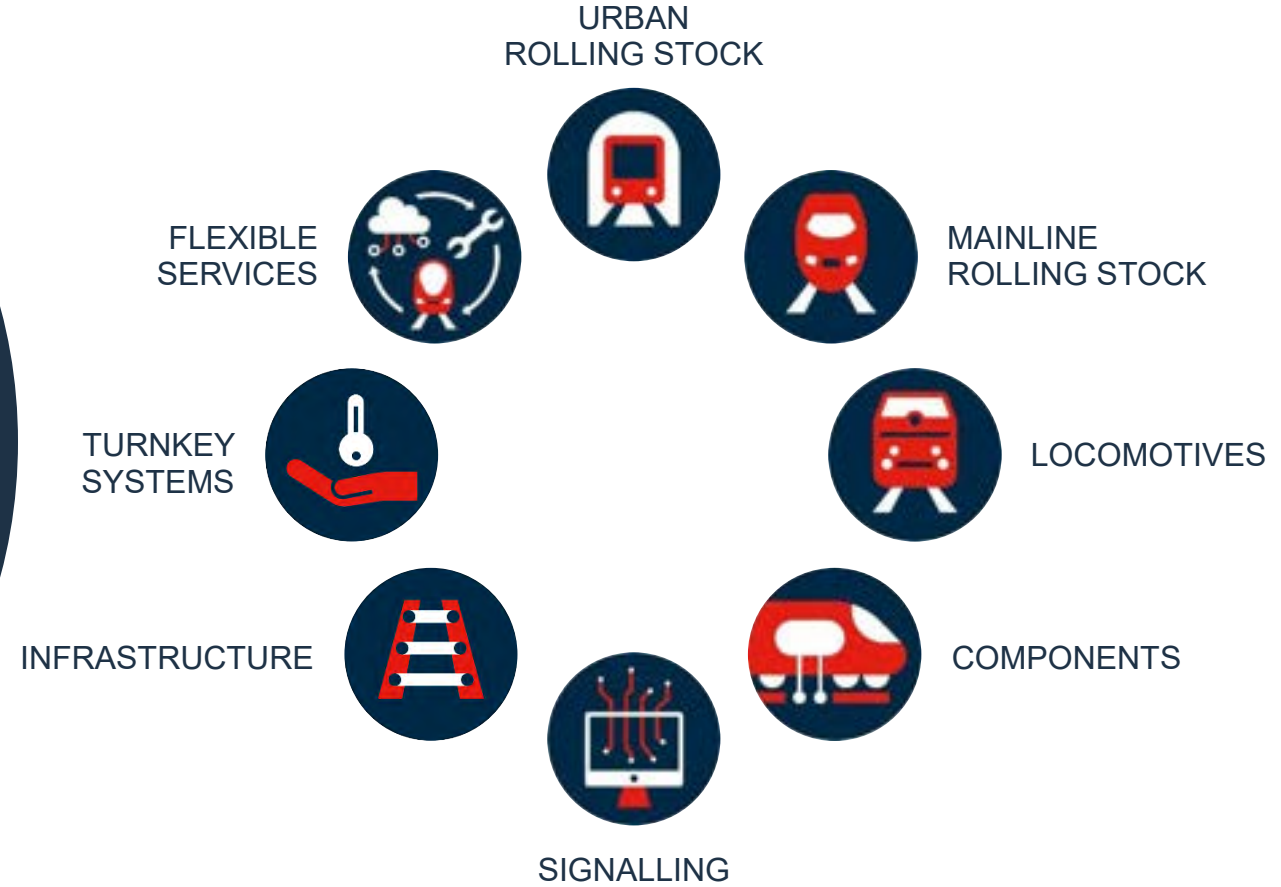
Leading the way to greener and smarter mobility, worldwide.

A global leader in the transportation sector in the digital age

Leading societies to a low carbon future

Alstom develops and markets mobility solutions that provide sustainable foundations for the future of transportation.

Our comprehensive product portfolio ranges from high-speed trains, metros, monorail and trams, to turnkey systems, services, infrastructure, signalling and digital mobility solutions.



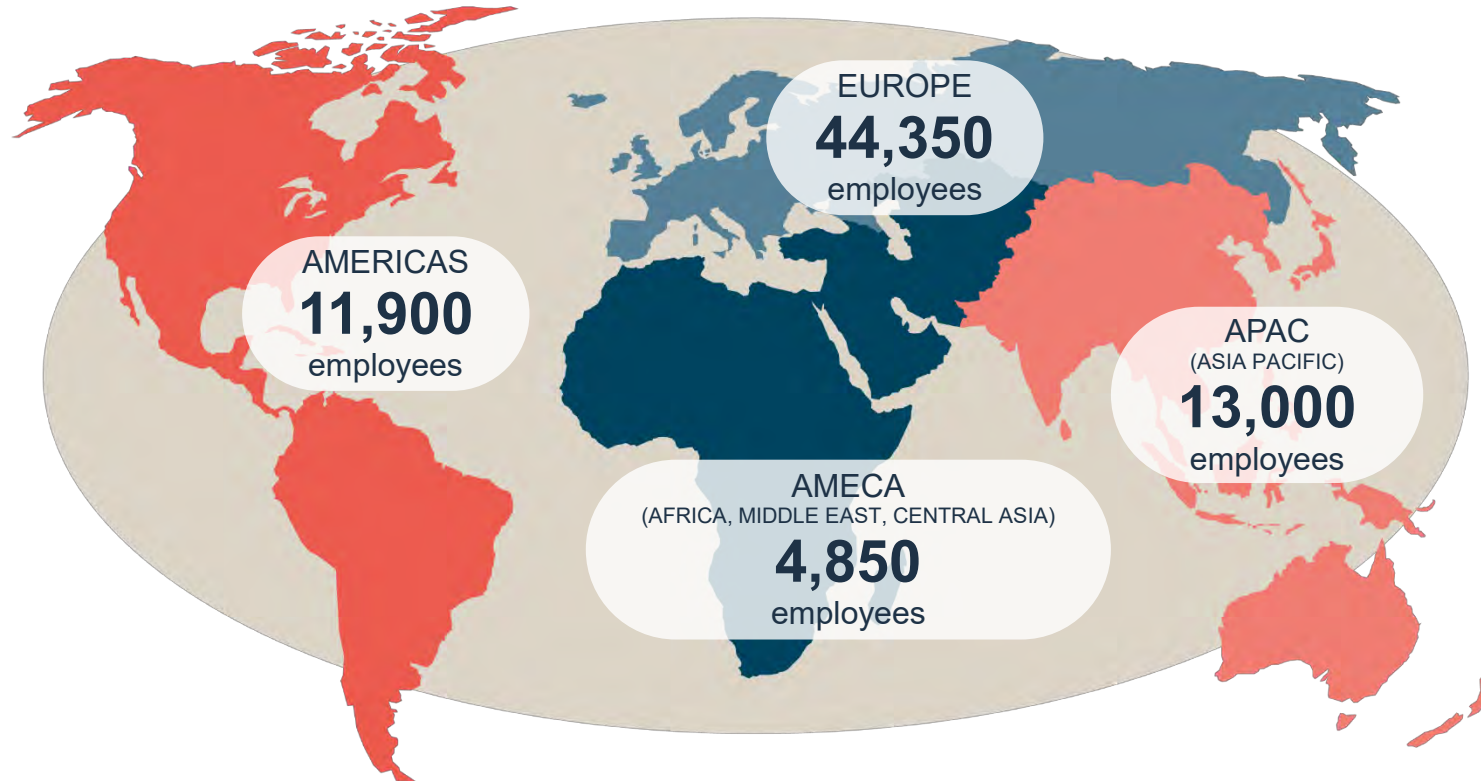
We are where mobility is needed

Over
74,000
employees worldwide

From
166
nationalities

70
countries

Over
250
sites



19,700
engineers

More than
9,400
patents

Over
150,000
vehicles in commercial
service

Partner to over
300
cities

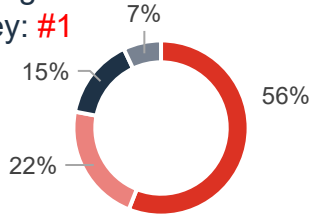
23,000 Suppliers and contractors worldwide
In over **88** countries

As of 31 March 2022

We are where mobility is needed

A WORLDWIDE LEADER WITH STRONG MARKET SHARES

Rolling stock: #1
 Services: #1
 Signaling: #2
 Turnkey: #1



■ Rolling stock ■ Services ■ Signalling ■ Turnkey

AN AMBITIOUS STRATEGIC PLAN: AiM 2025

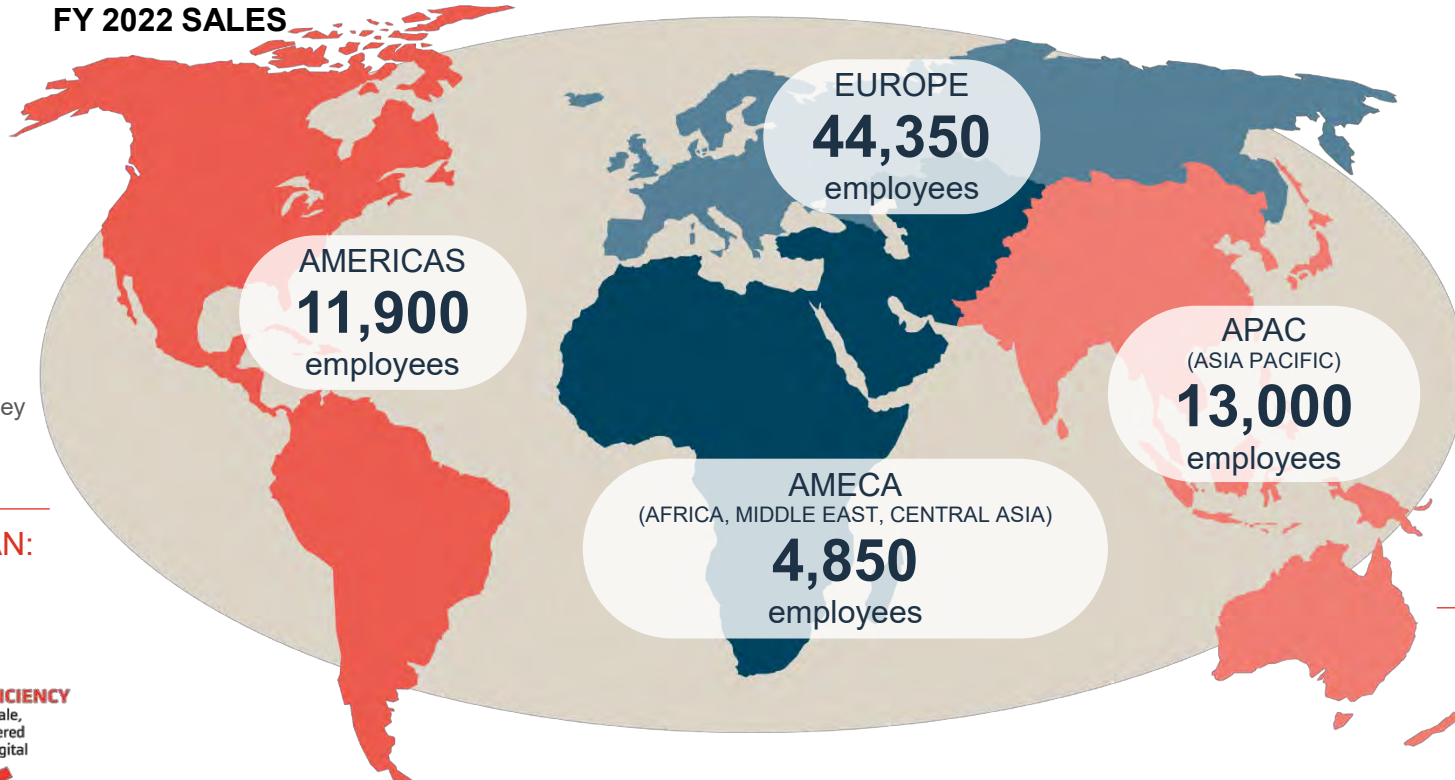
Leading the way to greener and smarter mobility, worldwide



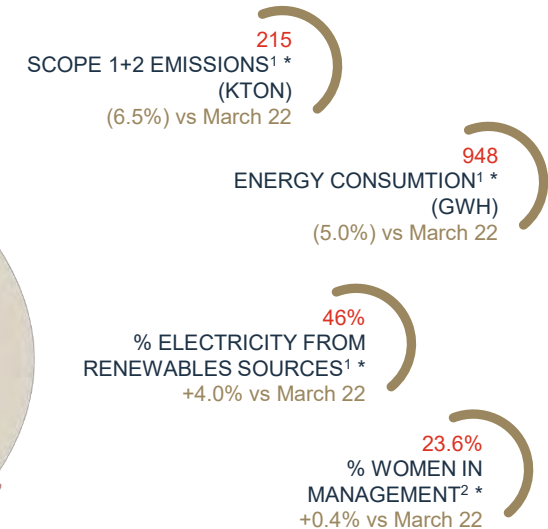
Driven by One Alstom team, Agile, Inclusive and Responsible

As of 31 March 2022

FY 2022 SALES



A RECOGNIZED CSR CHAMPION



LEADING THE INNOVATION RACE

- HYDROGEN
- AUTONOMOUS MOBILITY
- ENERGY EFFICIENCY
- DIGITAL SIGNALLING
- PREDICTIVE MAINTENANCE

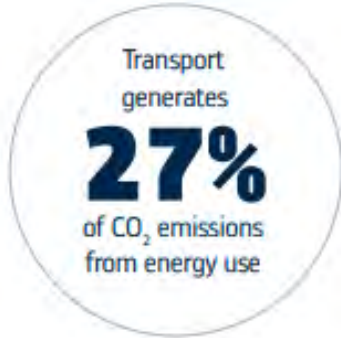
Sustainable Mobility at the heart of Alstom's business

SUSTAINABILITY ISSUES

Potential Global Temperature Increases by end of the century

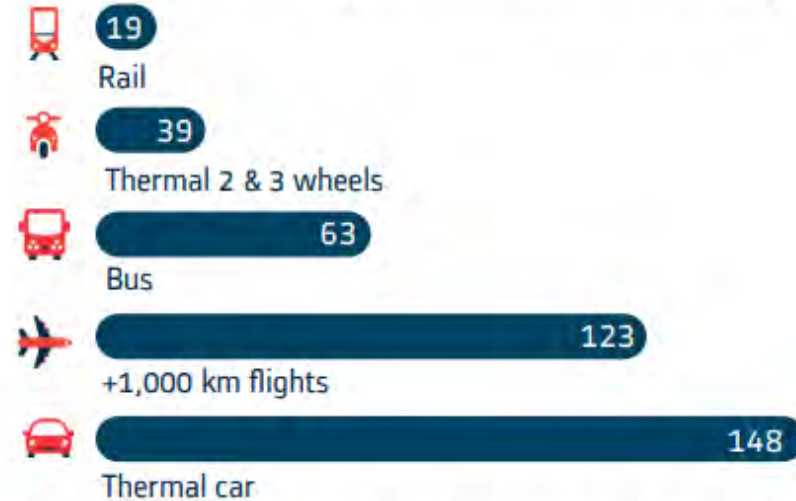


- 2.5-2.9°C Expected based on current policies & actions
- 2.4°C Likely to be reached based on current commitments
- 1.5°C Maximum increase targeted
- 1.1°C Temperature increase today



THE TRAIN IS ONE OF THE LEAST EMITTING MODES OF TRANSPORT

Average GHG emissions for powered transportation modes (gCO₂/pkm)



Source: www.iea.org/data-and-statistics/charts/well-to-wheel-wake-wing-ghg-intensity-of-motorised-passenger-transport-modes-in-2021.

Alstom directly contributes to Sustainable Development goals to provide access to safe, affordable, accessible and sustainable transport for all



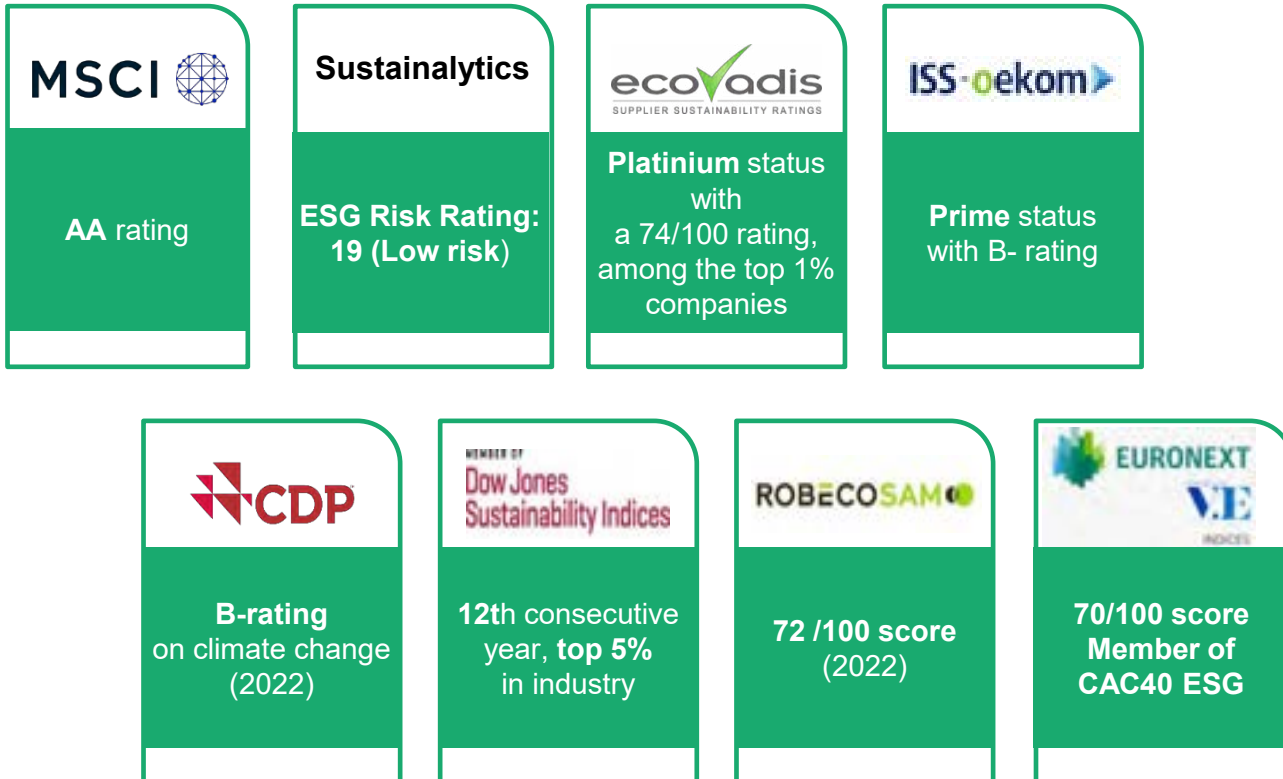
Alstom actively joins public initiatives, leading the way to sustainable mobility



More information: www.alstom.com/commitments/sustainable-mobility

Outstanding extra-financial ratings

Strong sustainable rating profile by main agencies



First railway manufacturer to obtain the label 'Committed to CSR' ('Engagé RSE') on ISO 26000 from AFNOR – France (2019), UK, Italy and Australia (2020), India, Spain (2021), Belgium (2022).



Four priorities to make the world more sustainable



Enabling decarbonisation of mobility

- Develop **energy-efficient and eco-designed solutions** leveraging **digital** technologies
- Lead **innovation** for **energy transition** in rail and beyond
- Use **renewable energy** in our factories to decrease carbon footprint



Acting as a responsible business partner

- Deploy **sustainable sourcing** as the cornerstone of our value chain
- Achieve the highest standards of **integrity**



Caring For our people

- Position **Health & Safety** as **utmost priority** for all, targeting zero severe accidents
- Cultivate **inclusion** as a key Alstom value focusing on gender and cultural diversity







Creating a positive impact on society

- Support **local socio-economic development** where we are present
- Develop corporate citizenship through **community investment** and **Alstom Foundation** projects



ESG commitments confirmed and extended



	KPIs	March 2022	March 2025
 ENABLING decarbonisation of mobility	<ul style="list-style-type: none"> • Energy reduction in solutions • Electricity supply from renewables² • % of newly-developed solutions eco-designed • % of circular (recycled) content in newly-developed trains - <i>New</i> 	22% 42% 50% -	25% 100% ² 100% 25%
 CARING for our people	<ul style="list-style-type: none"> • Total recordable injury rate • % women in management, engineering and professional roles • Global Top Employer certification • Learning Culture : hours per year and per employee- <i>New</i> 	2.3 23.2% 3 Regions 18	2 28% Global 22
 CREATING a positive impact on society	<ul style="list-style-type: none"> • Beneficiaries per year from local actions and Alstom Foundation • Countries with the CSR LABEL (AFNOR) – <i>New</i> 	>245,000 6	250,000 12
 ACTING as a responsible business partner	<ul style="list-style-type: none"> • % of suppliers monitored or assessed on CSR and E&C standards according to their level of risk • Suppliers trained in sustainability and CSR- <i>New</i> 	62% >100	100% 500

In addition, Alstom is committed to achieving **Net-zero carbon in value chain by 2050**

Commitment to Net-Zero Carbon in value chain by 2050

Alstom carbon footprint (FY 2021/22)

Scope 1 & 2

Direct and indirect emissions

230 ktCO₂

Scope 3

Use of Sold Products

32,000 ktCO₂

Scope 3

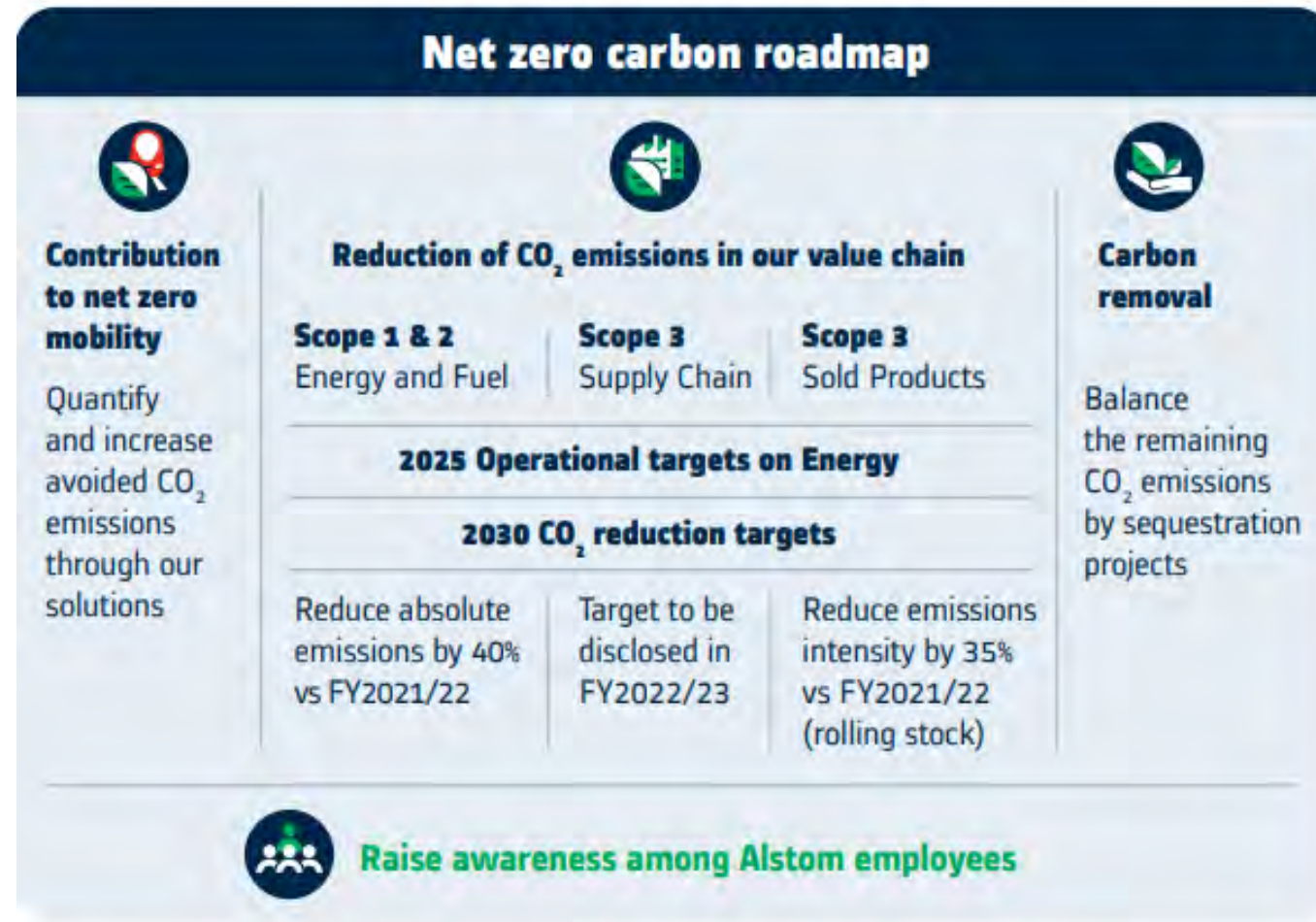
Business travels

6 ktCO₂

Scope 3

Logistics

33 ktCO₂



The 2030 reduction targets have been submitted to SBT initiative and are in process of validation.



Outlook of reduction levers towards CO2 targets



ENABLING decarbonisation of mobility

Scope 1 & 2 - Alstom sites

Scope 3 – Solutions Use

Decarbonising our operations



Placing energy-efficient electrical rail solutions at the heart of our portfolio



Enabling the transition to sustainable mobility solutions



Energy Efficiency of sites



Renewable Electricity supply



Production RNW electricity



Energy performance & Ecodesign



Green R&D



Client engagement





Enabling decarbonisation of mobility



Hesop™ reversible substation power converters for **reuse of energy** from braking mode



World's first hydrogen-powered Coradia iLint™ train entered passenger service in 2018

Solar panels at Trapaga factory, Spain



On-board battery energy storage systems for new or retrofitted trains for zero emissions on non-electrified lines



Solar panels at Sri City factory, India



Conversion of AGC dual mode trains to battery-electric



Avelia Horizon™ offers more capacity and **less energy consumption** from eco-design



Metropolis™ metros with **high recyclability of all materials** and low-weight design

Eco Design and circular economy maximize our products and services environmental and economic benefits

Energy efficiency



Efficient use & greener materials



Noise reduction



Reduction of air emissions / air quality



End of life / Circular economy



Healthier Mobility™



Inclusivity



25% energy reduction in solutions

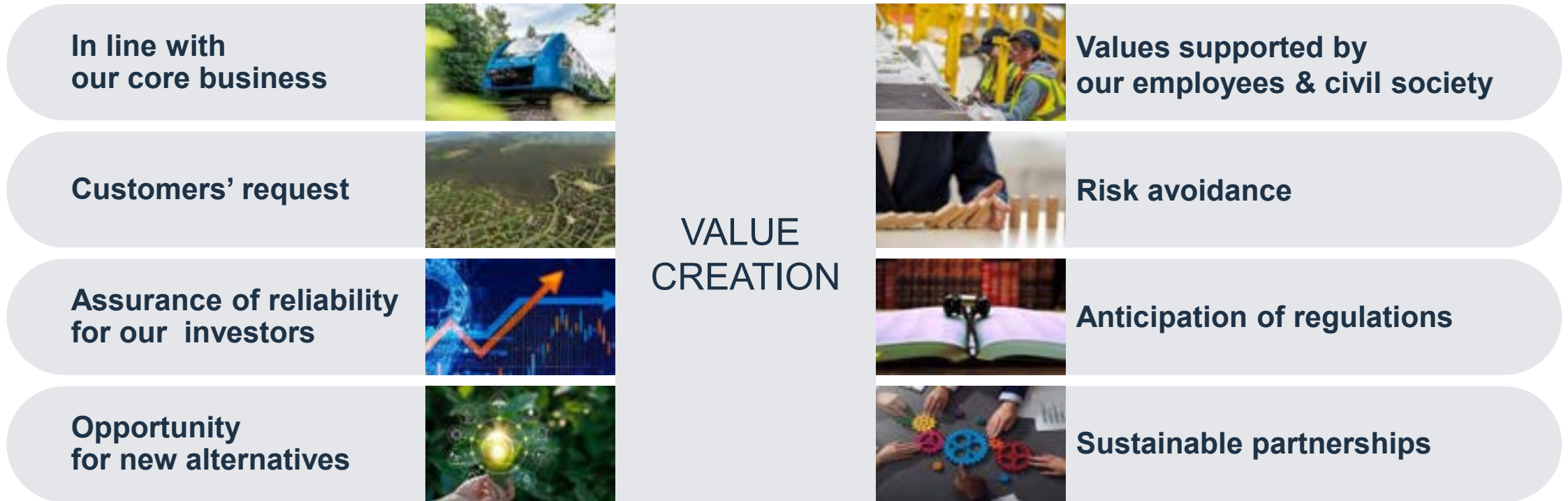
100% of newly developed solutions eco-designed

25 % recycled content in RS solutions





Acting as a responsible business partner Sustainable Procurement Rationale



Committed to deliver mobility solutions with social, environmental & economic virtuous impact from end to end !

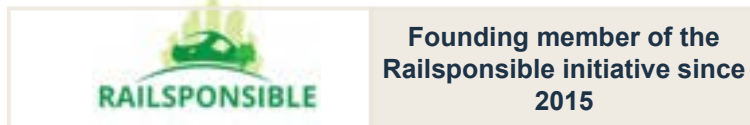


Acting as a responsible business partner



Sustainable Procurement

- Sourcing representing 60% of the Group's turnover
- Assessment of suppliers' CSR practices
 - 96% of purchase amount covered by the referenced suppliers¹ having signed the Ethics and Sustainable Development Charter²
 - 62%³ of total purchase volume covered by Ecovadis online assessments, on-site audits or screening
- Supplier development through awareness



Renewal ISO 37001 Certificate for all regions until 2023



Commitment to integrity

- Reinforce social audits on Alstom construction activities and high-risk suppliers
- Strengthen the integration of Human Rights risks in the tender process
- Ensure Alstom works with partners and suppliers who respect human rights standards by enhancing monitoring process with digital tools (ADIT)
- Raise employee awareness via Human Rights e-learning and strengthen alert procedure



1. Suppliers with whom Alstom has a spending exceeding €100,000, excluding the charters included in the general conditions of purchase 2. including EHS and Eco Design strategy. 3 Provisional and unaudited

Sustainable Procurement commitments by 2025

100%
of our suppliers screened
on E&C



**Acting as a responsible
business partner**



- **Ethics & Compliance screenings** of suppliers
- Signature of the **Ethics & Sustainable Development Charter** by suppliers

500
suppliers trained on Sustainability
& CSR



**Creating
a positive impact on society**



- Respond to **customer requests on local economic development**
- **Foster agility with SMEs and start-ups** for business development
- **Sharing expertise with our suppliers** to leverage their Sustainability performance

100%
of suppliers are monitored or
assessed on CSR performance



**Caring
for our partners**



- **Duty of vigilance** management
- **Health & Safety** as top priority for contractors
- Lead **onsite audits at suppliers** with a focus on **Human Rights & decent working conditions**

25%
recycled content in newly-
developed trains



**Enabling
decarbonization of mobility**



- Co-Develop **eco-designed solutions and circular business models with suppliers**
- **Addressing Climate Change** at railway sector level within **Railsponsible**



Alstom is committed
to achieving **net-zero** carbon in the value chain **by 2050**



Q&A

ALSTOM
• mobility by nature •